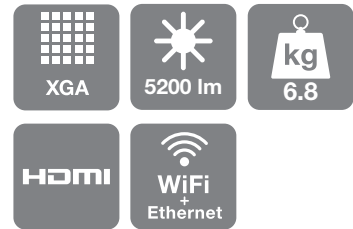


Epson EB-G5950/NL

DATASHEET



This best-in-class projector is designed and built to meet the exacting requirements of large venue installation.

Designed for large education and corporate venues, and specialist vertical markets, the projector has an equally high White and Colour Light Output (CLO) thanks to Epson's 3LCD technology. This means presentations have vivid yet natural colours even in full daylight.

With the EasyMP Network Presentation features, a wireless connection from your computer takes just three clicks and you can display up to four screens at once or compare and contrast data with the split-screen function. Up to 16 computers can be connected to the projector using the Multi-PC Projection feature.

Product durability is assured and TCO kept to a minimum with the addition of the long-life C²Fine Inorganic LCD panel and long-lasting lamp. And for low maintenance, the electrostatic filter can be cleaned or changed quickly. It's also environmentally-friendly, with a paint-free design, lead-free lenses, and recyclable packaging.

The projector is available in two models: the EB-G5950 which comes with the Standard Lens, and the EB-G5950NL which comes without a lens. Five optional lenses are available, allowing you to create the perfect projector to suit particular venues and different types of multimedia content.

KEY FEATURES

- Lens shift
- 3LCD for outstanding picture quality
- 5,200 lumens for bright daylight viewing
- Straightforward installation and operation
- Low maintenance with long-lasting lamp



PRODUCT SPECIFICATIONS

PROJECTION TECHNOLOGY	3LCD Technology 0.8 inch with MLA
RESOLUTION	XGA – 1024 x 768 (4:3 aspect ratio) Up to 1080p
WHITE LIGHT OUTPUT * Normal / Eco	5200 / 4160 Lumens
COLOUR LIGHT OUTPUT * Normal / Eco	5200 / 4160 Lumens
CONTRAST	2000:1
LAMP Life (Normal / Eco) Type	2000 / 3000 hours 330W UHE
LENS	EB-G5950: Standard Lens EB-G5950NL: no lens Optional lenses available, see Optional Lens Specifications chart for full details
CONNECTIVITY	
Video input	1 x RCA, 1 x S-Video, 2 x component (via D-sub 15-pin), 1 x HDMI, 1 x 1-BNC
Audio input	3 x Stereo mini-jack, 1 x RCA (R/L), 1 x HDMI
Digital input	1 x HDMI
Computer input	2 x D-sub 15-pin (RGB), 1 x 5-BNC
Control input	1 x RJ-45, 1 RS-232C
Computer output	1 x D-sub 15-pin (RGB)
Audio output	1 x Stereo mini-jack
Wireless connection	1x Wireless LAN Unit, 1 x optional Quick Wireless Connection USB Key
ADVANCED FEATURES	
Security	Security cable hole, lens lock, Kensington lock hole, Wireless LAN unit lock, password protection
Operation EasyMP features Display	Lens shift, split-screen function, direct power on/off, instant off EasyMP PC Free, EasyMP Network & Control, EasyMP Network Presentation 8 colour modes (including DICOM Simulation)
LANGUAGES	English / French / German / Italian / Spanish / Dutch / Portuguese / Danish / Russian / Swedish / Norwegian / Finnish / Polish / Hungarian / Slovenian / Czech / Ukrainian / Romanian / Catalan / Greek / Turkish / Arabic / Japanese / Korean / Traditional Chinese / Simplified Chinese / Thai
NOISE LEVEL Normal / Eco	38dB / 32dB
SOUND	1 x 7 Watt
WEIGHT	6.8kg
DIMENSIONS (W X D X H)	470 x 135 x 311.5mm
POWER CONSUMPTION Normal / Eco Standby	442W / 367W 0.47W
WARRANTY	2 years on main unit; 1 year on lamp

* ISO 21118 based measurement

PRODUCT LOGISTICS

PROJECTOR MODEL	EB-G5950	EB-G5950NL
SKU CODE	V11H3XXXXX	V11H3XXXXX
BARCODE	871594647XXXX	871594647XXXX
WHAT'S IN THE BOX	Projector Standard lens Power cable Computer cable Remote control and batteries Lens cover Cable cover Lens lock cover Password protect sticker Wireless LAN unit Bundled software User's manual set	Projector Power cable Computer cable Remote control and batteries Lens cover Cable cover Lens lock cover Password protect sticker Wireless LAN unit Bundled software User's manual set
GROSS WEIGHT	10.7kg	10.04kg
CARTON DIMENSIONS (L x W x H)	570 x 549 x 282mm	570 x 549 x 282mm

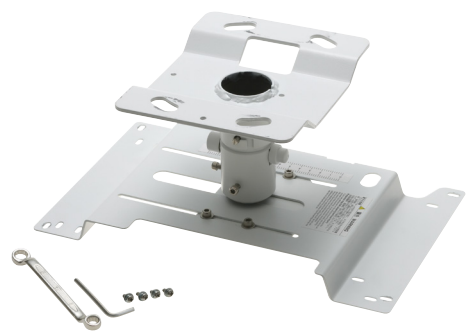
OPTIONAL LENSES

- **Standard Lens**
V12H004S05 (ELPLS05)
- **Rear Projection Wide Lens**
V12H004R03 (ELPLR03)
- **Middle Throw Zoom Lens 1**
V12H004M04 (ELPLM04)
- **Middle Throw Zoom Lens 2**
V12H004M05 (ELPLM05)
- **Long Throw Zoom Lens**
V12H004L06 (ELPLL06)

See *Optional Lens Specifications chart* for full details

OPTIONAL ACCESSORIES

- **Spare lamp**
V13H010L63 (ELPLP63)
- **Air filter**
V13H134A17 (ELPAF17)
- **Wireless LAN unit (ELPAP03)**
- **Quick Wireless Connection USB Key (ELPAP08)**
- **80-inch pull-up screen 16:10**
V12H002S24 (ELPSC24)
- **Epson Desktop Visualiser**
V12H3770XX (ELPDC11)
- **Epson USB Visualiser**
V12H321003 (ELPDC06)
- **Ceiling mount**
V12H003B22 (ELPMB22)
- **Ceiling pipe 668-918mm**
V12H003P13 (ELPPF13)
- **Ceiling pipe 918-1168mm**
V12H003P14 (ELPPF14)



Tailor-made ceiling mount for easy installation and security



For further information please contact your local Epson office or visit www.epson-europe.com

Austria 0810/20 01 13 (0,07 €/Min.) **Belgium** 070/350120 (0.1735 €/min.) **Czech** 800/142 052 **Denmark** 44 50 85 85 **Finland** 0201 552 091
France 09 74 75 04 04 (Cost of local call, operator charges may apply) **Germany** 01805/23 41 10 (0,14 €/Min. aus dem dt. Festnetz, Mobilfunkpreise abweichend. Ab 1.3.2010 Mobilfunkpreis max. 0,42 €/Min.) **Greece** 210-8099499 **Hungary** 06800 147 83 **Ireland** 01 436 7742 **Italy** 02-660321 10 (0,12 €/min.) **Luxembourg** 900/43010 (0,24 €/min.) **Middle East** +9714 8818934 **Netherlands** 0900-5050808 (0,05 €/oproep + 0,15 €/min.)
Norway +47 67 11 37 00 **Poland** 0-0-800 4911299 (0,16 zł/min.) **Portugal** 707 222 111 **Russia** (095) 777-03-55 **Slovakia** 0850 111 429
South Africa (+2711) 465-9621 **Spain** 93 582 15 00 **Sweden** 0771-400135 (Mobilsamtal – 0,99 kr/min, Lokala samtal – 0,30 kr/min, Utlandssamtal – 0,89 kr/min)
Switzerland 0848 448820 (4-8 cent./min.) **Turkey** (0212) 3360303 **United Kingdom** 0871 222 6702

Trademarks and registered trademarks are the property of Seiko Epson Corporation or their respective owners.
 Product information is subject to change without prior notice.

EPSON®